



WStG

PROJECT BRIEF





## CONTENTS

- Goals & Vision
- Concept Development
- Concept Design - A
- Concept Design - B
- Concept Design - C
- Detail Ideas



## GOALS & VISION

Site is located on a corner lot with a high-traffic road along the south property line. The area between the residence and pavilion slopes down towards the pavilion with a difference of 14-16" in height over approximately sixteen feet.

The goal of this study is to convert this landscape free green space into an intimate, functional patio exhibiting 'Zen' aesthetic without it being a Japanese-style garden. The concept of Zen means different things to different people. For the scope of this study, Zen will be interpreted through the use of clean straight lines; open, un-cluttered spaces, natural materials, and a subtle color palette to create a smooth transition from public to private spaces.

As requested, the concept study will include:

1. Area for table with seating
2. Separate area for casual seating
3. Hanging chair
4. Pergola (using beams to mimic those in the pavilion)
5. Hardscaping for patio floor
6. No solid roof over patio
7. Plantings (Zone Six tolerant plants)
8. Unique accents





### Note

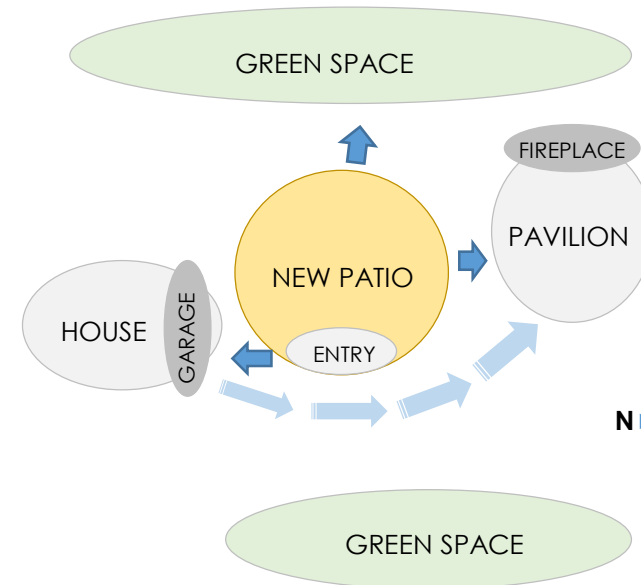
To accommodate grade change from the house to the pavilion, we recommend a simple solution using railroad ties to create large areas that gently step down towards pavilion. This should require minimum excavation and compliment the rustic look of the pavilion.

## CONCEPT DEVELOPMENT

We offer three layouts incorporating common design threads as well as unique elements, arrangements and patio size in each version. Highlights include:

- Entry portal with low fence and planting beds to delineate transition into a new space
- Perimeter plantings to create serene environment and soften access to pavilion
- Accents for sight and sound aesthetics (water, sculpture, graphics, etc.)
- Hardscaping in the form of stone tiles (and/or existing pavers used in the pavilion)
- Lighting – low voltage
- Structure(s) shall be understated to compliment – not compete – with pavilion design
- Rear stairway access to west side green space

**Note:** The large size of the picnic table (60" x 72") restricts layout options. A different style table is offered for consideration in Concept A. Concepts B & C incorporate a picnic table as requested.





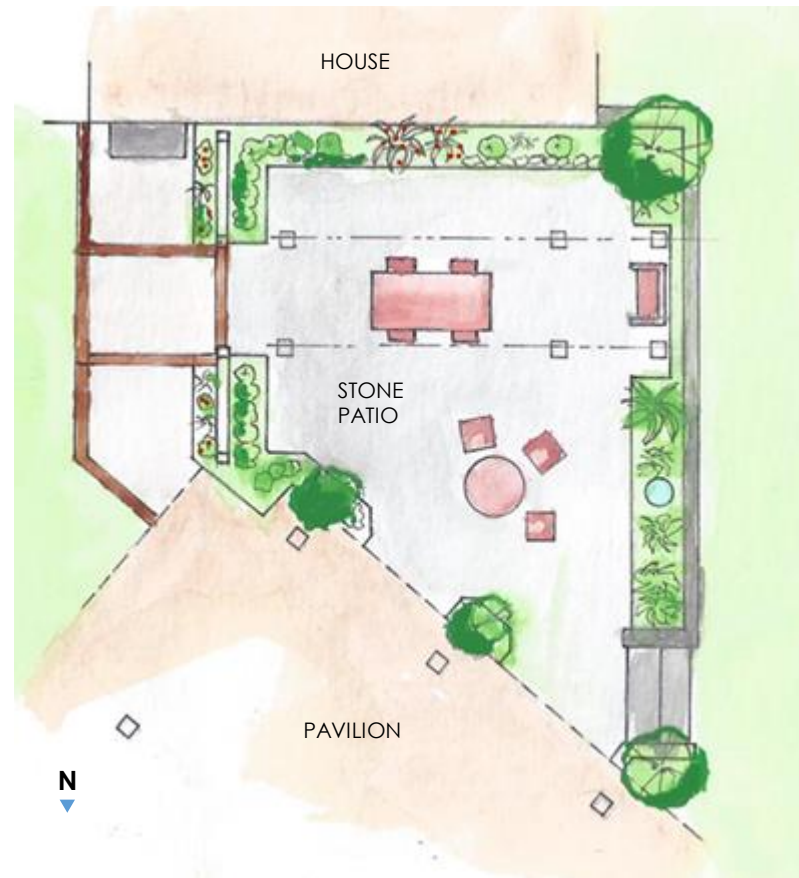
PROJECT BRIEF

# CONCEPT - 'A'

This concept is perhaps the most ambitious of the three, incorporating a large patio area expanded four feet beyond the west wall of the house. A long narrow table is aligned along the line-of-sight from the entry gate. Below the table, a rectangular area of contrasting stone is inserted into the floor. Above the table, a narrow pergola provides cover and a place for down-lighting while drawing the eye towards the hanging chair (or love seat) in the distance.

## Notes

1. Total square footage includes stairs and accents
2. All area values are approximate
3. Re-direct flow of down spout by man door to the greenspace on west side
4. Metal panel design not specified. See photos on pages 5 & 6
5. For additional details, see drawing set



## The Numbers

|                                       |     |
|---------------------------------------|-----|
| Total square feet of patio hardscape: | 300 |
| Square feet of hardscape for accents: | 55  |
| Square feet of hardscape for steps:   | 8   |
| Square feet of plant beds:            | 95  |
| Number of plant beds lights:          | 8   |
| Number of accent lights:              | 6   |
| Linear feet of retaining wall:        | 30  |



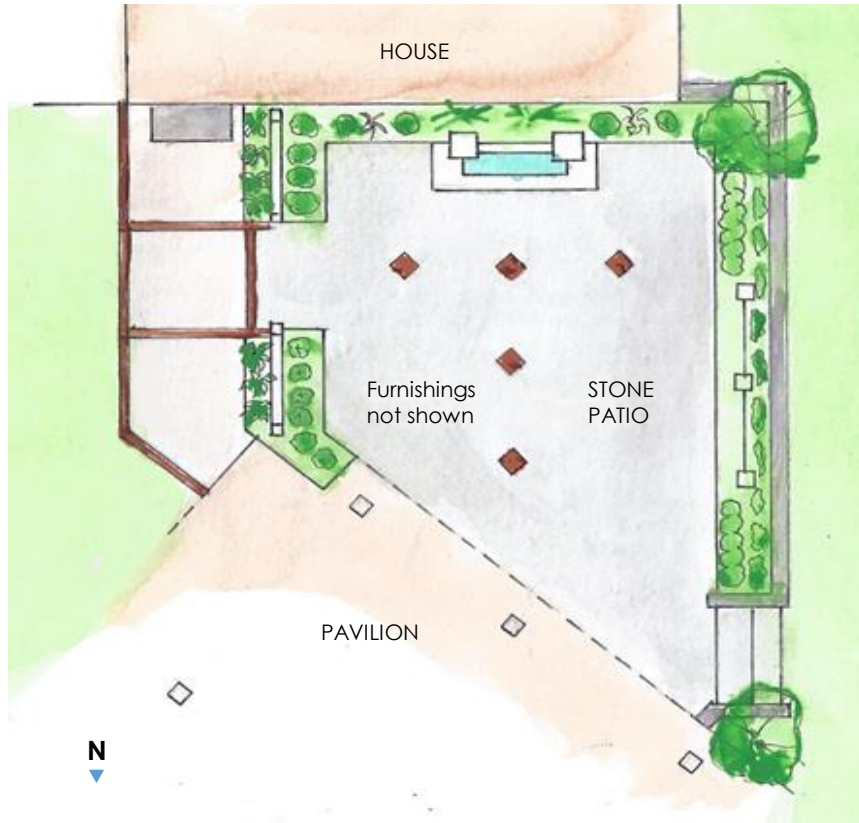
PROJECT BRIEF

# CONCEPT - 'B'

This concept epitomizes Zen design with its minimalism and open space floor plan. Patio area is expanded four feet beyond west side of house. Design includes a waterfall fountain, and simple stone floor inlays. Visual aesthetics are underscored by metal panel artwork, soothing plantings and comfortable sitting areas. A rustic stairway at the west side of the patio provides access to the green space behind the pavilion.

## Notes

1. Total square footage includes stairs and accents
2. All area values are approximate
3. Re-direct flow of down spout by man door to the greenspace on west
4. Metal panel design not specified. See photos on pages 5 & 6
5. **For additional details, see drawing set**



### The Numbers

|                                       |     |
|---------------------------------------|-----|
| Total square feet of patio hardscape: | 265 |
| Square feet of accent hardscape:      | 10  |
| Square feet of hardscape for steps:   | 8   |
| Square feet of plant beds:            | 95  |
| Number of plant beds lights:          | 6   |
| Number of accent lights:              | 5   |
| Linear feet of retaining wall:        | 30  |



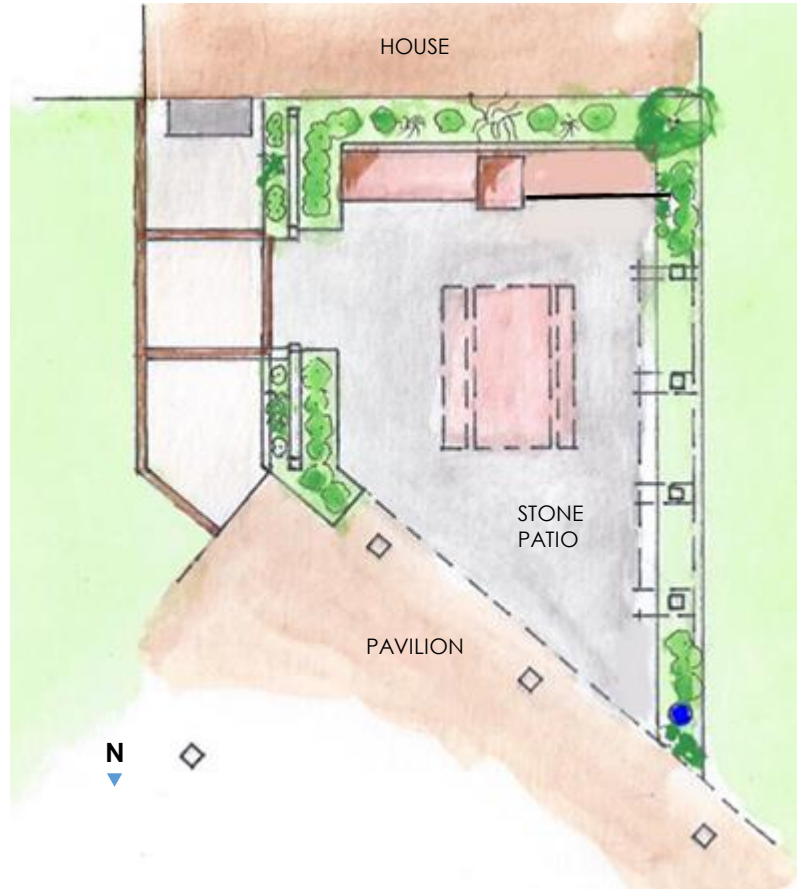
# CONCEPT - 'C'

This concept is the least complex of the three designs. Built-in benches are set along the house side of the patio. A small bamboo fountain is located in the landscaped corner near the pavilion to fill the patio with soothing sounds. A picnic table serves as an entertainment area, and an arbor fills the visual space above the west side planting bed.



## Notes

1. Total square footage includes stairs and accents
2. All area values are approximate
3. Re-direct flow of down spout by man door to the greenspace on west side
4. Metal panel design not specified. See photos on pages 5 & 6
5. For additional details, see drawing set



| The Numbers                           |     |
|---------------------------------------|-----|
| Total square feet of patio hardscape: | 177 |
| Square feet of accent hardscape:      | --  |
| Square feet of hardscape for steps:   | --  |
| Square feet of plant beds:            | 90  |
| Number of plant beds lights:          | 4   |
| Number of accent lights:              | 6+  |
| Linear feet of retaining wall:        | --  |



# DETAIL IDEAS

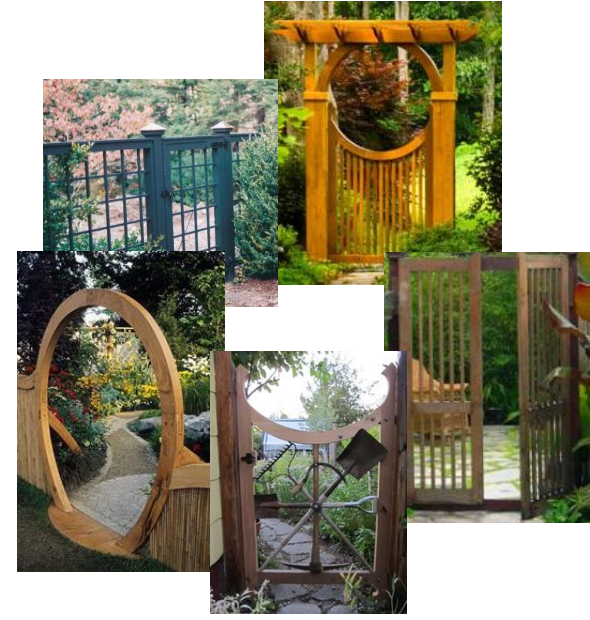
## PROJECT BRIEF



Water Features



Odds & Ends



Patio Gates